

Recombinant human Tryptase alpha/beta-1 protein

Catalog Number: ATGP3688

PRODUCT INFORMATION

Expression system

Baculovirus

Domain

31-275aa

UniProt No.

Q15661

NCBI Accession No.

NP_003285.2

Alternative Names

Tryptase alpha/beta-1, TPSAB1, TPS1, TPS2, TPSB1

PRODUCT SPECIFICATION

Molecular Weight

28.2 kDa (251aa)

Concentration

0.5mg/ml (determined by absorbance at 280nm)

Formulation

Liquid in. Phosphate-Buffered Saline (pH 7.4) containing 20% glycerol

Purity

> 90% by SDS-PAGE

Endotoxin level

< 1 EU per 1ug of protein (determined by LAL method)

Tag

His-Tag

Application

SDS-PAGE

Storage Condition

Can be stored at +2C to +8C for 1 week. For long term storage, aliquot and store at -20C to -80C. Avoid repeated freezing and thawing cycles.

BACKGROUND

Description

TPSAB1, also known as tryptase alpha/beta-1, is a serine protease with trypsin-like specificity. It is the key neutral protease present in mast cells and is discharged upon the coupled activation-degranulation response of this cell type. This protein is enzymatically active only as a heparin-stabilized tetramer, and is resistant to all known endogenous proteinase inhibitors. Also, it is implicated as a mediator in the pathogenesis of asthma and

Recombinant human Tryptase alpha/beta-1 protein

Catalog Number: ATGP3688

other allergic and inflammatory disorders. Recombinant human TPSAB1, fused to His-tag at C-terminus, was expressed in insect cell and purified by using conventional chromatography techniques.

Amino acid Sequence

IVGGQEAPRS KPWQVSLRV HGPYWMHFCG GSLIHPQWVL TAAHCVGPDV KDLAALRVQL REQHLYYQDQ LLPVSRIIVH
PQFYTAQIGA DIALLELEEP VNVSSHVHTV TLPPASETFF PGMPCWVTGW GDVDNDERLP PPFPLKQVKV PIMENHICDA
KYHLGAYTGD DVRIVRDDML CAGNTRRDSC QGDSGGPLVC KVNGTWLQAG VSWGEGCAQ PNRPGIYTRV
TYLDWIHHY VPKKP<HHHHH H>

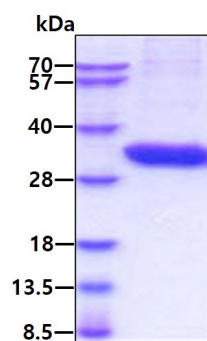
General References

Schwartz, L.B., et al, (1985) J. Immunol. 135:2762-2767.

Lewicki L., et al, (2015) Mediators Inflamm. 2015:395173.

DATA

SDS-PAGE



3ug by SDS-PAGE under reducing condition and visualized by coomassie blue stain.