

Recombinant human Clusterin/CLU protein

Catalog Number: ATGP2574

PRODUCT INFORMATION

Expression system

E.coli

Domain

23-449aa

UniProt No.

P10909

NCBI Accession No.

NP_001822

Alternative Names

Clusterin, CLI, AAG4, APOJ, KuB1, SGP2, SGP-2, SP-40, TRPM2, TRPM-2, MGC24903

PRODUCT SPECIFICATION

Molecular Weight

54.1 kDa (463aa)

Concentration

0.5mg/ml (determined by Bradford assay)

Formulation

Liquid in. 20mM Tris-HCl buffer (pH 8.0) containing 0.15M NaCl, 10% glycerol, 1mM DTT

Purity

> 85% by SDS-PAGE

Tag

His-Tag

Application

SDS-PAGE

Storage Condition

Can be stored at +2C to +8C for 1 week. For long term storage, aliquot and store at -20C to -80C. Avoid repeated freezing and thawing cycles.

BACKGROUND

Description

CLu, also known as clusterin, is a secreted chaperone that can under some stress conditions also be found in the cell cytosol. It has been suggested to be involved in several basic biological events such as cell death, tumor progression, and neurodegenerative disorders. Alternate splicing results in both coding and non-coding variants. Recombinant human CLu protein, fused to His-tag at N-terminus, was expressed in E. coli and purified by using conventional chromatography techniques.

Recombinant human Clusterin/CLU protein

Catalog Number: ATGP2574

Amino acid Sequence

<MRGSHHHHHH GMASMTGGQQ MGRDLYDDDD KDRWGS>DQTV SDNELQEMSN QGSKYVNKEI QNAVNGVKQI
KTLEKTNEE RKTLLSNLEE AKKKKEDALN ETRESETKLK ELPGVCNETM MALWEECKPC LKQTCMKFYA RVCRCGSGSLV
GRQLEEFNLQ SSPFYFWMNG DRIDSLEND RQQTHMLDVM QDHFSRASSI IDELFQDRFF TREPQDTYHY LPFSLPHRRP
HFFFPKSRIV RSLMPFSPYE PLNFHAMFQP FLEMIHEAQQ AMDIHFHSPA FQHPPTFIR EGDDDRTVCR EIRHNSTGCL
RMKDQCDKCR EILSVDCSTN NPSQAKLRRE LDESLOVAER LTRKYNELLK SYQWKMLNTS SLLEQLNEQF NWWVRLANLT
QGEDQYYLRV TTVASHTSDS DVPSGVTEVV VKLFSDPIT VTVPVEVSRK NPKFMETVAE KALQEYRKKH REE

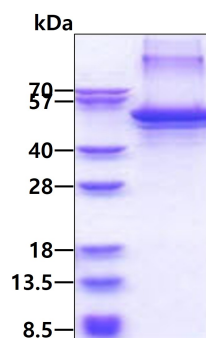
General References

Leskov K.S., et al. (2003) J. Biol. Chem. 278:11590-11600

Takahashi M., et al. (2004) Oncogene. 23:9289-9294

DATA

SDS-PAGE



3ug by SDS-PAGE under reducing condition and visualized by coomassie blue stain.