

# Recombinant human protocadherin/PCDHGC4 protein

Catalog Number: ATGP2521

## PRODUCT INFORMATION

---

**Expression system**

E.coli

**Domain**

30-692aa

**UniProt No.**

Q9Y5F7

**NCBI Accession No.**

NP\_115782

**Alternative Names**

protocadherin gamma-C4 isoform 2 precursor, PCDH-GAMMA-C4

## PRODUCT SPECIFICATION

---

**Molecular Weight**

74.3 kDa (684aa)

**Concentration**

1mg/ml (determined by Bradford assay)

**Formulation**

Liquid in. 20mM Tris-HCl buffer (pH 8.0) containing 0.4M urea, 10% glycerol

**Purity**

&gt; 85% by SDS-PAGE

**Tag**

His-Tag

**Application**

SDS-PAGE, Denatured

**Storage Condition**

Can be stored at +2C to +8C for 1 week. For long term storage, aliquot and store at -20C to -80C. Avoid repeated freezing and thawing cycles.

## BACKGROUND

---

**Description**

PCDHGL4 is a member of the protocadherin gamma gene cluster, one of three related clusters tandemly linked on chromosome five. These gene clusters have an immunoglobulin-like organization, suggesting that a novel mechanism may be involved in their regulation and expression. These neural cadherin-like cell adhesion proteins most likely play a critical role in the establishment and function of specific cell-cell connections in the brain. Recombinant human PCDHGL4 protein, fused to His-tag at N-terminus, was expressed in E. coli.

# Recombinant human protocadherin/PCDHGC4 protein

Catalog Number: ATGP2521

## Amino acid Sequence

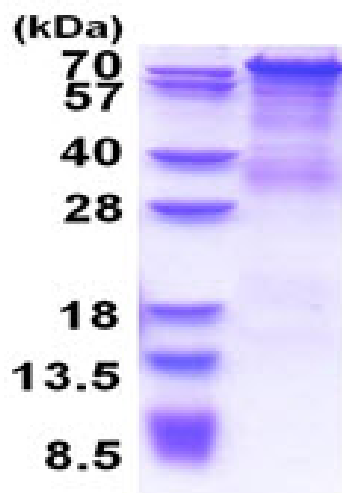
MGSSHHHHHH SSGLVPRGSH MQIRYPVPEE SEQGTFVGNV AQDFLLDTS LSARRLQVAG EVNQRHFRVD LDGALLIKN  
PIDREALCGL SASCIVPLEF VTEGPLEMYR AVEIVDVND HAPRFPRQL DLEIGEAAPP GQRFPLEKAQ DADVGSNSIS  
SYRLSSNEHF ALDVKKRSDG SLVPELLLEK PLDREKQSDY RLVLTAVDGG NPPRSGTAEI RVSVLVDVNDN APAFQQSSYR  
ISVLESAPAG MVLIIQLNASD PDLGPGSNVT FYFSGHTPDR VRNLFSLHPT TGKLTLLGPL DFESENYEF DVRARDGGSP  
AMEQHCSLRV DLLDVNDNAP YITVTSELGT LPESAEPGTV VALISVQDPD SGSNGDVSLR IPDHLPFALK SAFRNQFSLV  
TAGPLDREAK SSSYDIMVTAS DAGNPPLSTH RTIFLNISDV NDNPPSFFQR SHEVFPENN RPGDLLCSLA ASDPDSGLNA  
LISYSLEPR NRDVSASSFI SLNPQTGAVH ATRSFQYEQT QTLQFEVQAR DRGNPPLSST VTVRLFVLDL NDNAPAVLRP  
RARGSLCPQ ALPPSVGAGH LITKVTAVDL DSGYNAWVSY QLLEAPDPSL FAVSRYAGEV RTAVPIPADL PPQKLVIVVK  
DSGSPPLSTS VTLLVSLEED THPVVPLRE SSAPREGESR LTLY

## General References

Wu,Q., et al. (2001) Genome Res. 11 (3), 389-404  
Nollet,F., et al. (2000) J. Mol. Biol. 299 (3), 551-572

## DATA

### SDS-PAGE



3ug by SDS-PAGE under reducing condition and visualized by coomassie blue stain.

15% SDS-PAGE (3ug)