

Recombinant human Cathepsin W protein

Catalog Number: ATGP2501

PRODUCT INFORMATION

Expression system

E.coli

Domain

22-376aa

UniProt No.

P56202

NCBI Accession No.

NP_001326

Alternative Names

Cathepsin W preproprotein, CTSW, CatW, Lymphopain

PRODUCT SPECIFICATION

Molecular Weight

42 kDa (378aa)

Concentration

0.5mg/ml (determined by Bradford assay)

Formulation

Liquid in. 20mM Tris-HCl buffer (pH 8.0) containing 0.4M urea, 10% glycerol

Purity

> 85% by SDS-PAGE

Tag

His-Tag

Application

SDS-PAGE, Denatured

Storage Condition

Can be stored at +2C to +8C for 1 week. For long term storage, aliquot and store at -20C to -80C. Avoid repeated freezing and thawing cycles.

BACKGROUND

Description

The protein encoded by this gene, a member of the peptidase C1 family, is a cysteine proteinase that may have a specific function in the mechanism or regulation of T-cell cytolytic activity. The encoded protein is found associated with the membrane inside the endoplasmic reticulum of natural killer and cytotoxic T-cells. Expression of this gene is up-regulated by interleukin-2. Recombinant human CTSW protein, fused to His-tag at N-terminus, was expressed in E. coli.

Recombinant human Cathepsin W protein

Catalog Number: ATGP2501

Amino acid Sequence

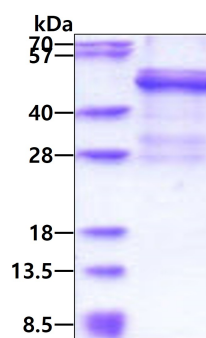
<MGSSHHHHH SSGLVPRGSH MGS>IRGPLRA QDLGPQPLEL KEAFKLFQIQ FNRSYLSPEE HAHRLDIFAH
NLAQAQLQE EDLGTAIEFGV TPFSDLTEEE FGQLYGYRRA AGGVPSMGRE IRSEEPESV PFSCDWRKVA GAISPIKDQK
NCNCCWAMAA AGNIETLWRI SFWDFVDVSV QELLDCGRCG DGCHGGFVWD AFITVLNNSG LASEKDYPFQ
GKVRARHCHP KKYQKVAWIQ DFIMLQNEH RIAQYLATYG PITVTINMKP LQLYRKGVK ATPTTCDPQL VDHSVLLVGF
GSVKSEEGIW AETVSSQSQP QPPHPTYWI LKNSWGAQWG EKGYFRLHRG SNTCGITKFP LTARVQKPDM KPRVSCPP

General References

Raab AK, Monkemuller K, et al. (2011). Biol Chem. 392(12):1167-72.
Stoeckle C, Gouttefangeas C, et al. (2009). Exp Hematol. 37(2):266-75.

DATA

SDS-PAGE



3ug by SDS-PAGE under reducing condition and visualized by coomassie blue stain.