

# Recombinant human JSRP1 protein

Catalog Number: ATGP2339

## PRODUCT INFORMATION

---

### Expression system

E.coli

### Domain

1-331aa

### UniProt No.

Q96MG2

### NCBI Accession No.

NP\_653217.1

### Alternative Names

Junctional sarcoplasmic reticulum protein 1, JP-45, JP45

## PRODUCT SPECIFICATION

---

### Molecular Weight

38 kDa (354aa) confirmed by MALDI-TOF (Molecular weight on SDS-PAGE will appear higher)

### Concentration

0.25mg/ml (determined by Bradford assay)

### Formulation

Liquid in. 20mM Tris-HCl buffer (pH 8.0) containing 0.15M NaCl, 10% glycerol

### Purity

> 90% by SDS-PAGE

### Tag

His-Tag

### Application

SDS-PAGE

### Storage Condition

Can be stored at +2C to +8C for 1 week. For long term storage, aliquot and store at -20C to -80C. Avoid repeated freezing and thawing cycles.

## BACKGROUND

---

### Description

JSRP1 is involved in excitation-contraction coupling at the sarcoplasmic reticulum. The protein can interact with CACNA1S, CACNB1, and calsequestrin to help regulate calcium influx and efflux in skeletal muscle. Recombinant human JSRP1 protein, fused to His-tag at N-terminus, was expressed in E. coli and purified by using conventional chromatography techniques.

### Amino acid Sequence

<MGSSHHHHHH SGLVPRGSH MGS>MSMTTRA WEELDGGLGS CQALDHSAL AETQEDRASA TPRLADSGSV

# Recombinant human JSRP1 protein

Catalog Number: ATGP2339

PHDSQVAEGP SVDTRPKKME KEPAARGTPG TGKERLKAGA SPRSVARKK AQTAPPLQPP PPPPALSEEL PWGDLSLNKC  
LVLASLVALL GSAFQLCRDA VPGEAALQAR VPEPWVPPSS APREPSSPLP KFEAQAPPSA PPAPRAEAEV RPKIPGSREA  
AENDEEEPE ATGEAVREDR VTLADRGPK RPRREGKPRK EKPRKEERP KERPRKEERP RAAREPREAL PQRWESREGG  
HRPWARDSDR AEPKQAWV SPRRPDEEQR PGRQKLRAG KGRD

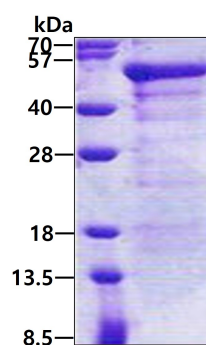
## General References

Yasuda T, Delbono O, et al. (2013). Hum Mutat. 34(1):184-90.

## DATA

---

### SDS-PAGE



3 $\mu$ g by SDS-PAGE under reducing condition and visualized by coomassie blue stain.