

Recombinant human LRG1 protein

Catalog Number: ATGP2295

PRODUCT INFORMATION

Expression system

E.coli

Domain

36-347aa

UniProt No.

P02750

NCBI Accession No.

NP_443204

Alternative Names

Leucine-rich alpha-2-glycoprotein, HMFT1766, LRG

PRODUCT SPECIFICATION

Molecular Weight

36 kDa (335aa)

Concentration

1mg/ml (determined by Bradford assay)

Formulation

Liquid in. 20mM Tris-HCl buffer (pH 8.0) containing 0.4M urea, 10% glycerol

Purity

> 90% by SDS-PAGE

Tag

His-Tag

Application

SDS-PAGE, Denatured

Storage Condition

Can be stored at +2C to +8C for 1 week. For long term storage, aliquot and store at -20C to -80C. Avoid repeated freezing and thawing cycles.

BACKGROUND

Description

The leucine-rich repeat (LRR) family of proteins, including LRG1, has been shown to be involved in protein-protein interaction, signal transduction, and cell adhesion and development. LRG1 is expressed during granulocyte differentiation. Recombinant human LRG1 protein, fused to His-tag at N-terminus, was expressed in E. coli.

Amino acid Sequence

<MGSSHHHHHH SGLVPRGSH MGS>VTLSPKD CQVFRSDHGS SISCQPPAEI PGYLPADTVH LAVEFFNLTH

Recombinant human LRG1 protein

Catalog Number: ATGP2295

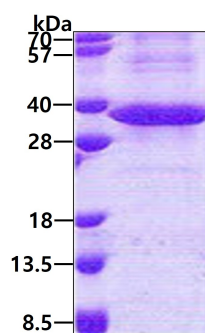
LPANLLQGAS KLQELHLSSN GLESLSPEFL RPVPQLRVLD LTRNALTGLP PGLFQASATL DTLVLKENQL EVLEVSWLHG
LKALGHLDLS GNRLRKLPPG LLANFTLLRT LDLGENQLET LPPDLLRGPL QLERLHLEGN KLQVLGKDLL LPQPDLRYLF
LNGNKLARVA AGAFQGLRQL DMLDLSNNSL ASVPEGLWAS LGQPNWDMRD GFDISGNPWI CDQNLSDLYR
WLQAQKDKMF SQNDTRCAGP EAVKGQTLA VAKSQ

General References

O'Donnell LC, Druhan LJ, et al. (2002). *J Leukoc Biol.* 72(3):478-85.
Cummings C, Walder J, et al. (2006). *Apoptosis.* 11(7):1121-9.

DATA

SDS-PAGE



3ug by SDS-PAGE under reducing condition and visualized by coomassie blue stain.