

# Recombinant human KLF3 protein

Catalog Number: ATGP2249

## PRODUCT INFORMATION

---

### Expression system

E.coli

### Domain

1-345aa

### UniProt No.

P57682

### NCBI Accession No.

NP\_057615

### Alternative Names

Krueppel-like factor 3, BKLF, TEF2

## PRODUCT SPECIFICATION

---

### Molecular Weight

41.2 kDa (368aa)

### Concentration

1mg/ml (determined by Bradford assay)

### Formulation

Liquid in. 20mM Tris-HCl buffer (pH 8.0) containing 0.4M urea, 10% glycerol

### Purity

> 90% by SDS-PAGE

### Tag

His-Tag

### Application

SDS-PAGE, Denatured

### Storage Condition

Can be stored at +2C to +8C for 1 week. For long term storage, aliquot and store at -20C to -80C. Avoid repeated freezing and thawing cycles.

## BACKGROUND

---

### Description

Krueppel-like factor3, also known as KLF3, is a member of the Sp1-like/KLF family. Kruppel-like factors (KLFs) comprise a family of evolutionarily conserved zinc finger-containing transcription factors with diverse regulatory functions in cell growth, proliferation, differentiation and embryogenesis. KLF3 is Kruppel-like zinc finger containing transcription factors. KLF3 may play a role in hematopoiesis. Recombinant human KLF3 protein, fused to His-tag at N-terminus, was expressed in E. coli.

# Recombinant human KLF3 protein

Catalog Number: ATGP2249

## Amino acid Sequence

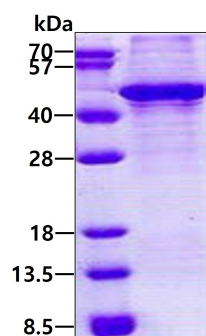
<MGSSHHHHHH SSGLVPRGSH MGS>MLMFDPV PVKQEAMDPV SVSYPSNYME SMKPNKYGVI YSTPLPEKFF  
QTPEGLSHGI QMEPVDLTVN KRSSPPSAGN SPSSLKFPSS HRRASPGLSM PSSSPPIKKY SPPSPGVQPF GVPLSMPPVM  
AAALSRHGIR SPGILPVIQPV VVQVPVPMY TSHLQQPLMV SLSEEMENSS SSMQVPVIES YEKPIQKKI KIEPGIEPQR  
TDYYPEEMSP PLMNSVSPQ ALLQENHPSV IVQPGKRPLP VESPDTRQR RIHRCDYDGC NKVYTKSSHL KAHRRTHTGE  
KPYKCTWEGC TWKFARSDDEL TRHFRKHTGI KPFQCPDCDR SFSRSDHLAL HRKRHMLV

## General References

Kaczynski J., et al. (2003) Genome Biol. 4:206  
Chiambaretta F., et al. (2004) Mol Vis. 10:901-909.

## DATA

### SDS-PAGE



3 $\mu$ g by SDS-PAGE under reducing condition and visualized by coomassie blue stain.