

Recombinant human SPA17 protein

Catalog Number: ATGP2045

PRODUCT INFORMATION

Expression system

E.coli

Domain

1-151aa

UniProt No.

Q15506

NCBI Accession No.

NP_059121

Alternative Names

Sperm surface protein Sp17, CT22, SP17, SP17-1

PRODUCT SPECIFICATION

Molecular Weight

19.8 kDa (174aa) confirmed by MALDI-TOF (Molecular weight on SDS-PAGE will appear higher)

Concentration

1mg/ml (determined by Bradford assay)

Formulation

Liquid in. Phosphate-Buffered Saline (pH 7.4) containing 10% glycerol

Purity

> 90% by SDS-PAGE

Tag

His-Tag

Application

SDS-PAGE

Storage Condition

Can be stored at +2C to +8C for 1 week. For long term storage, aliquot and store at -20C to -80C. Avoid repeated freezing and thawing cycles.

BACKGROUND

Description

SPA17 is a protein present at the cell surface. The N-terminus has sequence similarity to human cAMP-dependent protein kinase A (PKA) type II alpha regulatory subunit (RIIa) while the C-terminus has an IQ calmodulin-binding motif. The central portion of the protein has carbohydrate binding motifs and likely functions in cell-cell adhesion. The protein was initially characterized by its involvement in the binding of sperm to the zona pellucida of the oocyte. Recent studies indicate that it is also involved in additional cell-cell adhesion functions such as immune cell migration and metastasis. Recombinant human SPA17 protein, fused to His-tag at

Recombinant human SPA17 protein

Catalog Number: ATGP2045

N-terminus, was expressed in E. coli and purified by using conventional chromatography techniques.

Amino acid Sequence

<MGSSHHHHHH SSGLVPRGSH MGS>MSIPFSN THYRIPQGFG NLEGLTREI LREQDNIPA FAAAYFESLL EKREKTNFDP
AEWGSKVEDR FYNNHAFEEQ EPPEKSDPKQ EESQISGKEE ETSVTILDSS EEDKEKEEVA AVKIQAAPFRG HIAREEAKKM
KTNSLQNEEK EENK

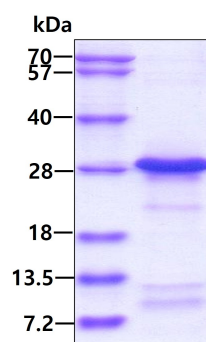
General References

Buchli R., et al. (2002) *Biochim. Biophys. Acta.* 1578:29-42

Li Z., et al. (2007) *Int. J. Cancer.* 121:1507-1511

DATA

SDS-PAGE



3ug by SDS-PAGE under reducing condition and visualized by coomassie blue stain.