

Recombinant human Cathepsin S protein

Catalog Number: ATGP1951

PRODUCT INFORMATION

Expression system

E.coli

Domain

17-331aa

UniProt No.

P25774

NCBI Accession No.

NP_004070

Alternative Names

MGC3886, CTSS, CatS, Cathepsin S

PRODUCT SPECIFICATION

Molecular Weight

38.1 kDa (336aa)

Concentration

1mg/ml (determined by Bradford assay)

Formulation

Liquid in. 20mM Tris-HCl buffer (pH 8.0) containing 0.4M urea, 10% glycerol

Purity

> 85% by SDS-PAGE

Tag

His-Tag

Application

SDS-PAGE, Denatured

Storage Condition

Can be stored at +2C to +8C for 1 week. For long term storage, aliquot and store at -20C to -80C. Avoid repeated freezing and thawing cycles.

BACKGROUND

Description

Cathepsin S, also known as CTSS, is a member of the peptidase C1 family. This protein is a lysosomal cysteine proteinase that may participate in the degradation of antigenic proteins to peptides for presentation on MHC class II molecules. CTSS can function as an elastase over a broad pH range in alveolar macrophages. Recombinant human CTSS protein, fused to His-tag at N-terminus, was expressed in E. coli.

Amino acid Sequence

<MGSSHHHHHH SGLVPRGSH M>QLHKDPTLD HHWHLWKKTY GKQYKEKNEE AVRRLIWEKN LKFVMLHNL

Recombinant human Cathepsin S protein

Catalog Number: ATGP1951

HSMGMHSYDL GMNHLGDMTS EEVMSLMSSL RVPSQWQRNI TYKSNPNWIL PDSVDWREKG CVTEVKYQGS
CGACWAFSAV GALEAQLKLG TGKLVLSAQ NLVDCSTEKY GNKGCNGGFM TTAQFYIIDN KGIDSDASYP YKAMDQKCQY
DSKYRAATCS KYTELPYGRE DVLKEAVANK GPVSVGVDAR HPSFFLYRSG VYYEPSCTQN VNHGVLVVG YGDLNGKEYWL
VKNSWGHNFG EEGYIRMARN KGNHCGIASF PSYPEI

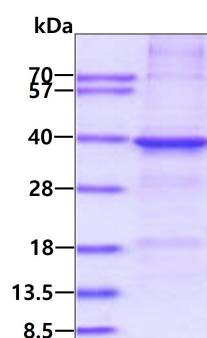
General References

Inagaki H., et al. (2007) J. Med. Chem. 50:2693-2699

Fengler A., et al. (1998) Protein Eng. 11:1007-1013

DATA

SDS-PAGE



3 μ g by SDS-PAGE under reducing condition and visualized by coomassie blue stain.