

# Recombinant human Ubch10/UBE2C protein

Catalog Number: ATGP1681

## PRODUCT INFORMATION

---

### Expression system

E.coli

### Domain

1-179aa

### UniProt No.

O00762

### NCBI Accession No.

NP\_008950

### Alternative Names

Ubiquitin-conjugating enzyme E2 C, E2 ubiquitin-conjugating enzyme C, Ubch10, Ubiquitin carrier protein C, Ubiquitin-protein ligase C

## PRODUCT SPECIFICATION

---

### Molecular Weight

22.1 kDa (202aa) confirmed by MALDI-TOF

### Concentration

1mg/ml (determined by Bradford assay)

### Formulation

Liquid in. 20mM Tris-HCl buffer (pH 8.0) containing 0.15M NaCl, 10% glycerol, 1mM DTT

### Purity

> 90% by SDS-PAGE

### Tag

His-Tag

### Application

SDS-PAGE

### Storage Condition

Can be stored at +2C to +8C for 1 week. For long term storage, aliquot and store at -20C to -80C. Avoid repeated freezing and thawing cycles.

## BACKGROUND

---

### Description

ubiquitin-conjugating enzyme E2 C, also known as uBE2C, is a member of the E2 ubiquitin-conjugating enzyme family. This enzyme is required for the destruction of mitotic cyclins and for cell cycle progression. It accepts ubiquitin from the E1 complex and catalyzes its covalent attachment to other proteins. Recombinant human uBE2C protein, fused to His-tag at N-terminus, was expressed in E. coli and purified by using conventional chromatography techniques.

# Recombinant human Ubch10/UBE2C protein

Catalog Number: ATGP1681

## Amino acid Sequence

<MGSSHHHHHH SSGLVPRGSH MGS>MASQNRD PAATSVAAR KGAEPSGGAA RGPV GKRLQQ ELMTLMMSGD  
KGISAFPE SD NLFKWWGTIH GAAGTVYEDL RYKLSLEFPS GYPYNAPT VK FLTPCYHPNV DTQGNICLDI LKEKWSALYD  
VRTILLSIQS LLGEPNIDSP LNTHAAELWK NPTAFKKYLQ ETYSKQVTSQ EP

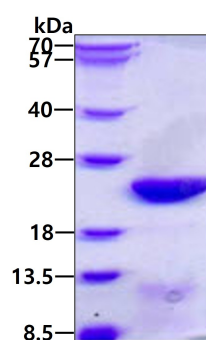
## General References

Okamoto Y., et al. (2003) Cancer Res. 63:4167-4173

Wagner K.W., et al. (2004) Oncogene. 23:6621-6629

## DATA

### SDS-PAGE



3ug by SDS-PAGE under reducing condition and visualized by coomassie blue stain.