

# Recombinant human Syntaxin 4 protein

Catalog Number: ATGP1667

## PRODUCT INFORMATION

---

### Expression system

E.coli

### Domain

1-275aa

### UniProt No.

Q12846

### NCBI Accession No.

NP\_004595

### Alternative Names

Syntaxin 4, p35-2, STX4A

## PRODUCT SPECIFICATION

---

### Molecular Weight

34.7 kDa (300aa) confirmed by MALDI-TOF

### Concentration

1mg/ml (determined by Bradford assay)

### Formulation

Liquid in. 20mM Tris-HCl buffer (pH 8.0) containing 0.1M NaCl, 40% glycerol, 1mM DTT

### Purity

> 90% by SDS-PAGE

### Tag

His-Tag

### Application

SDS-PAGE

### Storage Condition

Can be stored at +2C to +8C for 1 week. For long term storage, aliquot and store at -20C to -80C. Avoid repeated freezing and thawing cycles.

## BACKGROUND

---

### Description

Syntaxin 4, also known as STX4, belongs to the syntaxin/epimorphin family of proteins. Syntaxin family is cellular receptors for transport vesicles which participate in exocytosis in neutrophils. Syntaxin 4 is crucial for normal insulin-stimulated glucose uptake in skeletal muscle and decreases in Syntaxin 4 protein levels result in reduction of whole-body insulin-stimulated glucose metabolism. Recombinant human STX4 protein, fused to His-tag at N-terminus, was expressed in E. coli and purified by using conventional chromatography techniques.

## Recombinant human Syntaxin 4 protein

Catalog Number: ATGP1667

### Amino acid Sequence

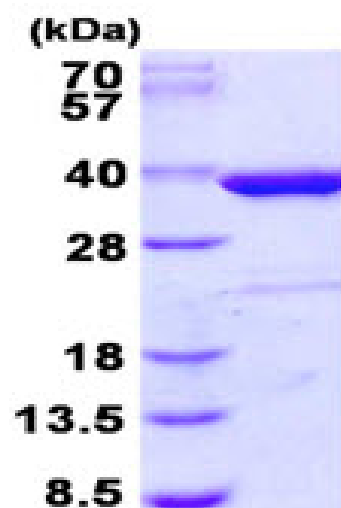
MGSSHHHHHH SGLVPRGSH MGSMMRDRT HELRQGDDSS DEEDKERVAL VVHPGTARLG SPDEEFFHKV RTIRQTIVKL  
GNKVQELEKQ QVTILATPLP EESMKQELQN LRDEIKQLGR EIRLQLKAIE PQKEEADENY NSVNTRMRKT QHGVLSQQFV  
ELINKNSMQ SEYREKNVER IRRQLKITNA GMVSDEELEQ MLDSGQSEVF VSNILKDTQV TRQALNEISA RHSEIQQLER  
SIRELHDIFT FLATEVEMQG EMINRIEKNI LSSADYVERG QEHVKTALEN QKKARKKKVL

### General References

Yang C., et al. (2001) J Clin Invest. 107: 1311-1318  
Bennett M K., et al. (1993) Cell. 74: 863-873.

## DATA

### SDS-PAGE



3ug by SDS-PAGE under reducing condition and visualized by coomassie blue stain.

15% SDS-PAGE (3ug)