

# Recombinant human NCE2/UBE2F protein

Catalog Number: ATGP1607

## PRODUCT INFORMATION

---

**Expression system**

E.coli

**Domain**

1-185aa

**UniProt No.**

Q969M7

**NCBI Accession No.**

NP\_542409

**Alternative Names**

NEDD8-conjugating enzyme uBE2F, NCE2

## PRODUCT SPECIFICATION

---

**Molecular Weight**

23.7 kDa (209aa) confirmed by MALDI-TOF

**Concentration**

1mg/ml (determined by Bradford assay)

**Formulation**

Liquid in. 20mM Tris-HCl buffer (pH 8.0) containing 30% glycerol, 1mM DTT, 200mM NaCl

**Purity**

&gt; 95% by SDS-PAGE

**Tag**

His-Tag

**Application**

SDS-PAGE

**Storage Condition**

Can be stored at +2C to +8C for 1 week. For long term storage, aliquot and store at -20C to -80C. Avoid repeated freezing and thawing cycles.

## BACKGROUND

---

**Description**

uBE2F, also known as ubiquitin-conjugating enzyme E2 F, belongs to the ubiquitin-conjugating enzyme family and uBE2F subfamily. Ubiquitin-conjugating enzymes more rarely as ubiquitin-carrier enzymes, perform the second step in the ubiquitination reaction that targets a protein for degradation via the proteasome. uBE2F accepts the ubiquitin-like protein NEDD8 from the uBA3-NAE1 E1 complex and catalyzes its covalent attachment to other proteins. Recombinant human uBE2F protein, fused to His-tag at N-terminus, was expressed in E. coli and purified by using conventional chromatography techniques.

## Recombinant human NCE2/UBE2F protein

Catalog Number: ATGP1607

### Amino acid Sequence

<MGSSHHHHHH SSGLVPRGSH MGSH>MLTLAS KLRDDGLKG SRTAATASDS TRRVSVRDKL LVKEVAELEA  
NLPCTCKVHF PDPNKLHCFQ LTVTPDEGY QGGKFQFETE VPDAYNMVPP KVKCLTKIWH PNITETGEIC LLLREHSID  
GTGWAPTRTL KDVVWGLNSL FTDLLNFDDP LNIEAAEHHL RDKEDFRNKV DDYIKRYAR

### General References

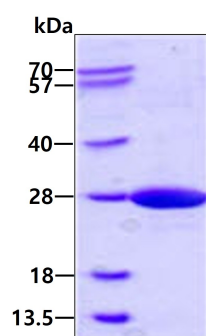
Huang D.T., et al. (2009) Mol. Cell 33:483-495

Nandi, D. et al. (2006) Journal of biosciences 31 (1): 137-55.

## DATA

---

### SDS-PAGE



3ug by SDS-PAGE under reducing condition and visualized by coomassie blue stain.