

Recombinant human JAM-A/F11R protein

Catalog Number: ATGP1556

PRODUCT INFORMATION

Expression system

E.coli

Domain

26-238aa

UniProt No.

Q9Y624

NCBI Accession No.

NP_058642

Alternative Names

Junctional adhesion molecule A, JAM-A, Junctional adhesion molecule 1, JAM-1, Platelet F11 receptor, Platelet adhesion molecule 1, PAM-1, CD321, F11R, JAM1, JCAM

PRODUCT SPECIFICATION

Molecular Weight

25.8 kDa (238aa) confirmed by MALDI-TOF

Concentration

1mg/ml (determined by BCA assay)

Formulation

Liquid in. 20mM Tris-HCl buffer (pH 8.0) containing 10% glycerol 0.15M NaCl,1mM DTT

Purity

> 90% by SDS-PAGE

Tag

His-Tag

Application

SDS-PAGE

Storage Condition

Can be stored at +2C to +8C for 1 week. For long term storage, aliquot and store at -20C to -80C. Avoid repeated freezing and thawing cycles.

BACKGROUND

Description

F11R, also known as CD321, belongs to the immunoglobulin superfamily. It seems to play a role in epithelial tight junction formation. Tight junctions represent one mode of cell-to-cell adhesion in epithelial or endothelial cell sheets, forming continuous seals around cells and serving as a physical barrier to prevent solutes and water from passing freely through the paracellular space. F11R protein can act as (1) a receptor for reovirus, (2) a ligand for the integrin LFA1, involved in leukocyte transmigration, and (3) a platelet receptor. Recombinant

Recombinant human JAM-A/F11R protein

Catalog Number: ATGP1556

human F11R protein, fused to His-tag at N-terminus, was expressed in E. coli and purified by using conventional chromatography techniques.

Amino acid Sequence

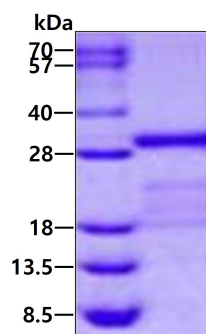
<MGSSHHHHHH SSGLVPRGSH MGSHM>LGSVT VHSSEPEVRI PENNPVKLSC AYSGFSSPRV EWKFDQDGT
RLVCYNNKIT ASYEDRVTFLL PTGITFKSVT REDTGTYTCM VSEEGGNSYG EVKVKLIVLV PPSKPTVNIP SSATIGNRAV
LTCSEQDGSP PSEYTWFKDG IVMPTNPKST RAFSNSSYVL NPTTGELVFD PLSASDTGEY SCEARNGYGT PMTSNAVRME
AVERNNGV

General References

Murakami, M., et al. (2011) PLoS ONE 6 (6), E21242

DATA

SDS-PAGE



3ug by SDS-PAGE under reducing condition and visualized by coomassie blue stain.