

# Recombinant human Syntaxin 12 protein

Catalog Number: ATGP1536

## PRODUCT INFORMATION

---

### Expression system

E.coli

### Domain

1-248aa

### UniProt No.

Q86Y82

### NCBI Accession No.

NP\_803173.1

### Alternative Names

Syntaxin 12, STX13, STX14

## PRODUCT SPECIFICATION

---

### Molecular Weight

31.0 kDa (272aa) confirmed by MALDI-TOF

### Concentration

0.5mg/ml (determined by Bradford assay)

### Formulation

Liquid in. 20mM Tris-HCl buffer (pH 8.0) containing 0.2M NaCl, 20% glycerol, 1mM DTT

### Purity

> 85% by SDS-PAGE

### Tag

His-Tag

### Application

SDS-PAGE

### Storage Condition

Can be stored at +2C to +8C for 1 week. For long term storage, aliquot and store at -20C to -80C. Avoid repeated freezing and thawing cycles.

## BACKGROUND

---

### Description

Syntaxin 12, also known as, belongs to the syntaxin family. Syntaxin family is cellular receptors for transport vesicles which participate in exocytosis in neutrophils. STX12 regulates protein transport between late endosomes and the trans-Golgi network and interacts with ABC1 (ATP-binding cassette transporter A1), a protein that facilitates cellular release of choline-phospholipids and cholesterol to apoA-I (apolipoprotein A-I). Recombinant human STX12 protein, fused to His-tag at N-terminus, was expressed in E. coli and purified by using conventional chromatography techniques.

# Recombinant human Syntaxin 12 protein

Catalog Number: ATGP1536

## Amino acid Sequence

<MGSSHHHHHH SSGLVPRGSH MGS<MSYGPL DMYRNPGPSG PQLRDFSSII QTCSGNIQRI SQATAQIKNL  
MSQLGTKQDS SKLQENLQQL QHSTNQLAKE TNELLKELGS LPLPLSTSEQ RQRLQKERL MNDFSAALNN FQAVQRRVSE  
KEKESIARAR AGSRLSAEER QREEQLVSFD SHEEWNQMQS QEDEVAITEQ DLELIKERET AIRQLEADIL DVNQIFKDLA  
MMIHDQGDLI DSIEANVESS EVHVERATEQ LQRAAYYQKK SR

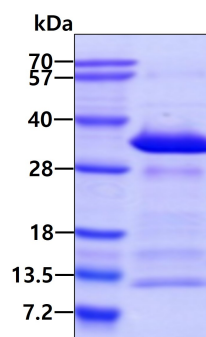
## General References

Tang B L., et al. (1998) J Biol Chem. 273:6944-6950.

Prekeris R., et al. (1998) J Cell Biol. 143: 957-971.

## DATA

### SDS-PAGE



3ug by SDS-PAGE under reducing condition and visualized by coomassie blue stain.