

Recombinant human PDCL3 protein

Catalog Number: ATGP1383

PRODUCT INFORMATION

Expression system

E.coli

Domain

1-239aa

UniProt No.

Q9H2J4

NCBI Accession No.

NP_076970

Alternative Names

Phosducin-Like protein 3, Phosducin-Like protein 3, HTPHLP, MGC3062, PHLP2A, PHLP3, VIAF, VIAF1

PRODUCT SPECIFICATION

Molecular Weight

30 kDa (262aa) confirmed by MALDI-TOF

Concentration

1mg/ml (determined by Bradford assay)

Formulation

Liquid in. 20mM Tris-HCl buffer (pH 8.0) containing 10% glycerol, 0.1M NaCl

Purity

> 90% by SDS-PAGE

Tag

His-Tag

Application

SDS-PAGE

Storage Condition

Can be stored at +2C to +8C for 1 week. For long term storage, aliquot and store at -20C to -80C. Avoid repeated freezing and thawing cycles.

BACKGROUND

Description

PDCD3 is a member of the phosducin-like protein family and is a putative modulator of heterotrimeric G proteins. The protein shares extensive amino acid sequence homology with phosducin. Members of the phosducin-like protein family have been shown to bind to the beta-gamma subunits of G proteins. Recombinant human PDCL3 protein, fused to His-tag at N-terminus, was expressed in E. coli and purified by using conventional chromatography.

Recombinant human PDCL3 protein

Catalog Number: ATGP1383

Amino acid Sequence

<MGSSHHHHH SSGLVPRGSH MGS>MQDPNAD TEWNDILRKK GILPPKESLK EEEEEEEEQ RILQOSVVKT
YEDMTLEELE DHEDEFNEED ERAIEMYRRR RLAEWKATKL KNKFGEVLEI SGKDYVQEVK KAGEGLWVIL HLYKQGIPLC
ALINQHLSGL ARKFPDVKFI KAISTTCIPN YPDRNLPTIF VYLEGDIKAQ FIGPLVFGGM NLTRDELEWK LSESGAIMTD
LEENPKKPIE DVLLSSVRRS VLMKRDSSE GD

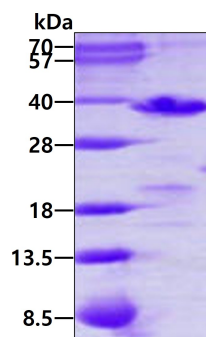
General References

Blaauw M. et al. (2003) EMBO J. 22: 5047-5057.

Wilkinson J.C. et al. (2004) J. Biol. Chem. 279: 51091-51099.

DATA

SDS-PAGE



3 μ g by SDS-PAGE under reducing condition and visualized by coomassie blue stain.