

# Recombinant human NTF2/NUTF2 protein

Catalog Number: ATGP0595

## PRODUCT INFORMATION

---

### Expression system

E.coli

### Domain

1-127aa

### UniProt No.

P61970

### NCBI Accession No.

NP\_005787

### Alternative Names

Nuclear transport factor 2, NTF2, Placental protein 15, PP15, NuTF 2, PP 15

## PRODUCT SPECIFICATION

---

### Molecular Weight

16.6 kDa (147aa) confirmed by MALDI-TOF

### Concentration

1mg/ml (determined by Bradford assay)

### Formulation

Liquid in. Phosphate-Buffered Saline (pH 7.4) containing 10% glycerol

### Purity

> 95% by SDS-PAGE

### Tag

His-Tag

### Application

SDS-PAGE

### Storage Condition

Can be stored at +2C to +8C for 1 week. For long term storage, aliquot and store at -20C to -80C. Avoid repeated freezing and thawing cycles.

## BACKGROUND

---

### Description

NuTF2 is a cytosolic factor that facilitates protein transport into the nucleus. It interacts with the nuclear pore complex glycoprotein p62 and Ran. This protein acts at a relative late stage of nuclear protein import, subsequent to the initial docking of nuclear import ligand at the nuclear envelope. It binds directly to RanGDP and may modulate the steady-state distribution of Ran. Recombinant human NuTF2, fused to His-tag at N-terminus, was expressed in E. coli and purified by using conventional chromatography.

## Recombinant human NTF2/NUTF2 protein

Catalog Number: ATGP0595

### Amino acid Sequence

<MGSSHHHHHH SSGLVPRGSH> MGDKPIWEQI GSSFIQHYYQ LFDNDRTQLG AIYIDASCLT WEGQQFQGKA  
AIVEKLSSLP FQKIQHSITA QDHQPTPDSC IISMVVGQLK ADEDPIMGFH QMFLKNIND AWWCTNDMFR LALHNFG

### General References

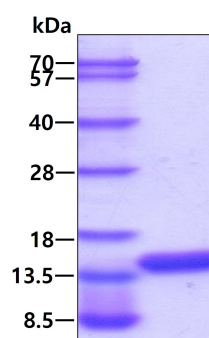
Gerace L., et al. (1995) J Cell Biol. 129(4):925-37.

Tang SB., et al. (2009) Mol Vis. 15:861-9.

## DATA

---

### SDS-PAGE



3ug by SDS-PAGE under reducing condition and visualized by coomassie blue stain.