

Recombinant human Podoplanin/PDPN protein

Catalog Number: PDP0801

PRODUCT INFORMATION

Expression system

E.coli

Domain

99-207aa

UniProt No.

Q86YL7

NCBI Accession No.

NP_006465

Alternative Names

TIA2, T1A, T1 ALPHA GENE, T1 alpha, Podoplanin, PDPN, PA2.26 antigen, OTTHuMP00000044504, OTTHuMP00000009640, OTS8, Lung type I cell membrane-associated glycoprotein isoform a, Lung type I cell membrane associated glycoprotein isoform a AGGRuS, Lung type I cell membrane associated glycoprotein, hT1alpha2, hT1alpha1, HT1A-1, GP40, Gp38, GP36, Glycoprotein 36 KD

PRODUCT SPECIFICATION

Molecular Weight

13.4 kDa (130aa) confirmed by MALDI-TOF

Concentration

1mg/ml (determined by BCA assay)

Formulation

Liquid in. 20mM Tris-HCl buffer (pH 7.5) containing 0.1M NaCl

Purity

> 95% by SDS-PAGE

Tag

His-Tag

Application

SDS-PAGE

Storage Condition

Can be stored at +2C to +8C for 1 week. For long term storage, aliquot and store at -20C to -80C. Avoid repeated freezing and thawing cycles.

BACKGROUND

Description

Podoplanin (PDPN) is a small mucin-like transmembrane protein, widely expressed in various specialized cell types throughout the body. This is a type-I integral membrane glycoprotein with diverse distribution in human tissues. The physiological function of this protein may be related to its mucin-type character. The homologous

Recombinant human Podoplanin/PDPN protein

Catalog Number: PDP0801

protein in other species has been described as a differentiation antigen and influenza-virus receptor. Recombinant human PDPN protein, fused to His-tag at N-terminus, was expressed in *E. coli* and purified by conventional chromatography techniques.

Amino acid Sequence

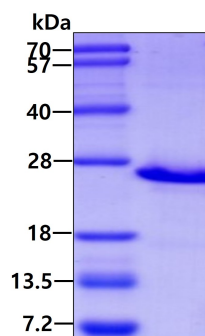
<MGSSHHHHHH SSGLVPRGSH> MASTGQPEDD TETTGLEGGV AMPGAEDDVV TPGTSEDTRYK SGLTTLVATS
VNSVTGIRIE DLPTSESTVH AQEQSPSATA SNVATSHSTE KVDGDTQTTV EKDGLSTVTL

General References

Wicki A., et al. (2006) *Br J Cancer*. 96(1):1-5.
Zimmer G., et al. (1999) *Biochem J*. 341, 277-84.

DATA

SDS-PAGE



3 μ g by SDS-PAGE under reducing condition and visualized by coomassie blue stain.