

Recombinant e.coli GroES protein

Catalog Number: GRS3002

PRODUCT INFORMATION

Expression system

E.coli

Domain

1-97aa

UniProt No.

P0A6F9

NCBI Accession No.

NP_418566

Alternative Names

CPN10, GroES, 10 kDa chaperonin, groS, mopB, 10 kDa heat shock protein mitochondrial, Chaperonin 10, Cpn 10, Early pregnancy factor, EPF, Heat shock 10kD protein 1 chaperonin 10, Heat shock 10kDa protein 1, Heat shock 10kDa protein 1 chaperonin 10, HSP 10, HSP10, HSPE 1, HSPE1,

PRODUCT SPECIFICATION

Molecular Weight

10.4 kDa (97aa) confirmed by MALDI-TOF

Concentration

1mg/ml (determined by Bradford assay)

Formulation

Liquid in. 25mM Tris-HCl buffer (pH 7.5) containing 100mM NaCl, 5mM DTT, 10%glycerol

Purity

> 95% by SDS-PAGE

Tag

Non-Tagged

Application

SDS-PAGE

Storage Condition

Can be stored at +2C to +8C for 1 week. For long term storage, aliquot and store at -20C to -80C. Avoid repeated freezing and thawing cycles.

BACKGROUND

Description

GroES protein is the co-chaperonin of GroES in E. coli and assists protein folding. GroEL mediated folding requires the co-chaperonin GroES which is essential for viability. GroES is composed of a single heptameric ring of 10kDa subunits that binds to the ends of the GroEL cylinder. GroES gene was amplified by PCR from E. coli and cloned into an expression vector. This protein was overexpressed in E. coli and was purified by using

Recombinant e.coli GroES protein

Catalog Number: GRS3002

conventional chromatography techniques.

Amino acid Sequence

MNIRPLHDRV IVKRKEVETK SAGGIVLTGS AAKSTRGEV LAVGNRILE NGEVKPLDVK VGDIVIFNDG YGVKSEKIDN
EEVLIMSESD ILAIVEA

General References

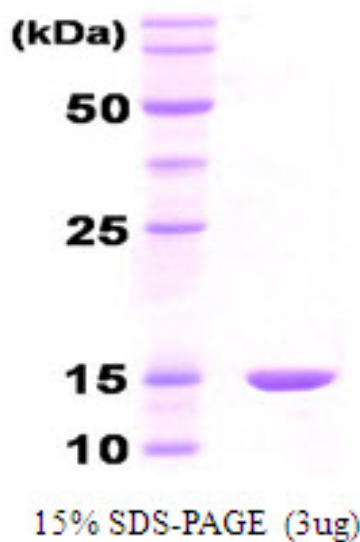
Jue D. Wang , et al (1998) Proc. Natl. Acad. Sci. uSA 95, 12163-12168

Landry,S.J., et al(1993) Nature 364 , 255-258

Xu, Z., et al(1997) Nature 388,741-750

DATA

SDS-PAGE



3ug by SDS-PAGE under reducing condition and visualized by coomassie blue stain.