

Recombinant human alpha-Synuclein 112/NACP112 protein

Catalog Number: SNA2005

PRODUCT INFORMATION

Expression system

E.coli

Domain

1-112aa

UniProt No.

P37840

NCBI Accession No.

NP_000336.1

Alternative Names

SNCA, NACP, PARK1, PARK4, PD1, α -synuclein Non-A beta component of AD amyloid, Non-A4 component of amyloid precursor, Parkinson disease 4, autosomal dominant Lewy body

PRODUCT SPECIFICATION

Molecular Weight

11.3 kDa (112aa) confirmed by MALDI-TOF

Concentration

1mg/ml (determined by BCA assay)

Formulation

Liquid in. 20mM Tris-HCl buffer (pH 7.5) containing 0.1M NaCl

Purity

> 95% by SDS-PAGE

Tag

Non-Tagged

Application

SDS-PAGE

Storage Condition

Can be stored at +2C to +8C for 1 week. For long term storage, aliquot and store at -20C to -80C. Avoid repeated freezing and thawing cycles.

BACKGROUND

Description

An alternatively spliced (103-129) form of alpha-synuclein. alpha-synuclein112 was cloned into an E. coli expression vector by RT-PCR.. The recombinant protein was purified to apparent homogeneity by taking advantage of the thermosolubility of the protein and by using conventional column chromatography techniques.

Amino acid Sequence

MDVFMKGLSK AKEGVVAAAE KTKQGVAEAA GKTKEGVLYV GSKTKEGVVH GVATVAEKTQ EQVTNVGGAV

Recombinant human alpha-Synuclein 112/NACP112 protein

Catalog Number: SNA2005

VTGVTAVAQK TVEGAGSIAA ATGFVKKDQL GKEGYQDYEP EA

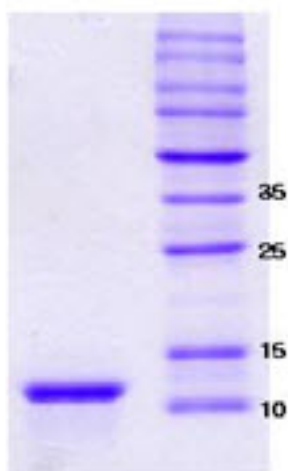
General References

ueda K., et al. (1994) Biochem. Biophys. Res. Commun. 205(2):1366-72.

Park SM., et al. (2002) Blood. 100(7):2506-2514.

DATA

SDS-PAGE



3ug by SDS-PAGE under reducing condition and visualized by coomassie blue stain.

15% SDS-PAGE (3ug)