

Human Tollip antibody

Catalog Number: ATGA0568

PRODUCT INFORMATION

Catalog number

ATGA0568

Clone No.

k1B17

Product type

Monoclonal antibody

UnitProt No.

Q9H0E2

NCBI Accession No.

NP_061882

Alternative Names

Toll interacting protein,IL-1RAcPIP

Additional Information

This product was produced from tissue culture supernatant.

PRODUCT SPECIFICATION

Antibody Host

Mouse

Reacts With

Human

Concentration

1mg/ml (determined by BCA assay)

Formulation

Liquid in. Phosphate-Buffered Saline (pH 7.4) with 0.02% Sodium Azide, 10% glycerol

Immunogen

Recombinant human Tollip (61-274aa) purified from E. coli

Isotype

IgG2a kappa

Purification Note

By protein-A affinity chromatography

Application

ELISA, WB

Usage

The antibody has been tested by ELISA and Western blot analysis to assure specificity and reactivity. Since application varies, however, each investigation should be titrated by the reagent to obtain optimal results.

Human Tollip antibody

Catalog Number: ATGA0568

Storage

Can be stored at +2C to +8C for 1 week. For long term storage, aliquot and store at -20C to -80C. Avoid repeated freezing and thawing cycles.

BACKGROUND

Description

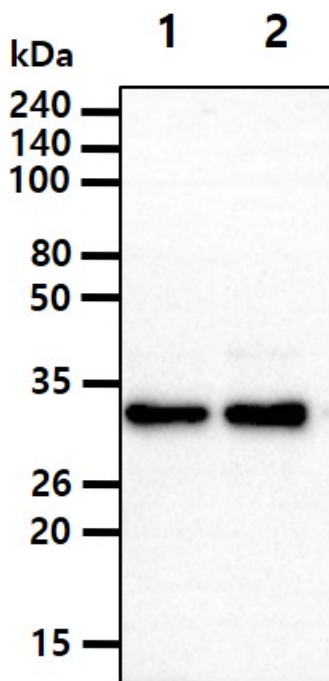
Toll interacting protein, also known as Tollip, is an inhibitory adaptor protein within the signaling pathway of IL-1 and Toll-like receptors (TLR). The Toll-like receptors are essential transmembrane signaling receptors of the innate immune system that alert the host to the presence of a microbial invader. Tollip recruits IRAK1 to the IL-1 receptor complex and inhibits IRAK1 phosphorylation and kinase activity.

General References

- Ciarrocchi A. et al., (2009) Published online. 4(2):e4404.
- Didierlaurent A. et al., (2006) Mol Cell Biol. 26(3):735-742.
- Opal S.M. et al., (2002) Crit Care. 6(2):125-136.
- Burns K. et al., (2000) Nat Cell Biol. 2(6):346-351.

DATA

Western blot analysis (WB)



The cell lysates(40ug) were resolved by SDS-PAGE, transferred to PVDF membrane and probed with anti-human Tollip antibody (1:1000). Proteins were visualized using a goat anti-mouse secondary antibody conjugated to HRP and an ECL detection system.
Lane 1.: Jurkat cell lysate
Lane 2.: HepG2 cell lysate