

# Human Cathepsin Z antibody

Catalog Number: ATGA0304

## PRODUCT INFORMATION

---

**Catalog number**

ATGA0304

**Clone No.**

AT6G11

**Product type**

Monoclonal Antibody

**UnitProt No.**

Q9UBR2

**NCBI Accession No.**

NP\_001327

**Alternative Names**

Carboxypeptidase LB, Cathepsin B2, Cathepsin IV, Cathepsin P, Cathepsin X, Cathepsin Y, Cathepsin Z, Cathepsin Z preproprotein, Cathepsin Z1, CatX, CTSP, CTSX, CTSZ, Cysteine-type carboxypeptidase, Lysosomal carboxypeptidase B

## PRODUCT SPECIFICATION

---

**Antibody Host**

Mouse

**Reacts With**

Human

**Concentration**

1mg/ml (determined by BCA assay)

**Formulation**

Liquid in. Phosphate-Buffered Saline (pH 7.4) with 0.02% Sodium Azide, 10% glycerol

**Immunogen**

Recombinant human CTSZ (62-303aa) purified from E. coli

**Isotype**

IgG2b kappa

**Purification Note**

By protein-A affinity chromatography

**Application**

ELISA, WB, ICC/IF

**Usage**

The antibody has been tested by ELISA, Western blot analysis to assure specificity and reactivity. Since application varies, however, each investigation should be titrated by the reagent to obtain optimal results. Recommended starting dilution is 1:1000.

# Human Cathepsin Z antibody

Catalog Number: ATGA0304

## Storage

Can be stored at +2C to +8C for 1 week. For long term storage, aliquot and store at -20C to -80C. Avoid repeated freezing and thawing cycles.

## BACKGROUND

### Description

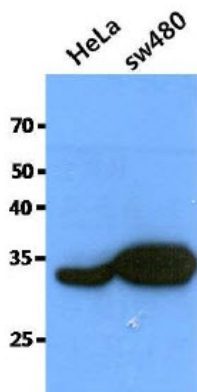
CTSZ (Cathepsin Z), also known as Cathepsin X and Cathepsin P, is 303 amino acid protein. It is lysosomal cysteine proteinase and member of the peptidase C1 family. It exhibits carboxy-monopeptidase as well as carboxy-dipeptidase activity. This gene is widely expressed in cancer cell lines, primary tumors. CTSZ may be involved in tumor progression. And, CTSZ plays a role in normal intracellular protein degradation

### General References

- Pungercar. J., et al. (2000) Pflugers Arch 439: R119-R121
- Pungercar. J. and Ivanovski. G. (2000) Pflugers Arch 439: R116-R118
- Naegler. D.K., et al. (1999) Biochemistry 38: 12648-12654

## DATA

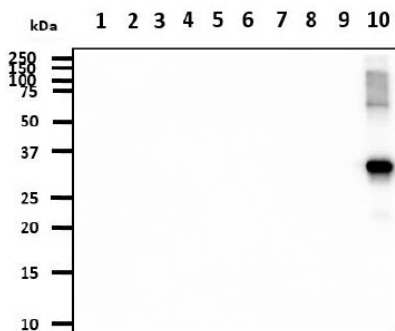
### Western blot analysis (WB)



The cell lysates of HeLa (40ug) and SW480 (40ug) were resolved by SDS-PAGE, transferred to PVDF membrane and probed with anti-human CTSZ antibody (1:1000). Proteins were visualized using a goat anti-mouse secondary antibody conjugated to HRP and an ECL detection system.

The recombinant proteins (20ng) were resolved by SDS-PAGE, transferred to PVDF membrane and probed with anti-human CTSZ antibody (1:1000). Proteins were visualized using a goat anti-mouse secondary antibody conjugated to HRP and an ECL detection system.

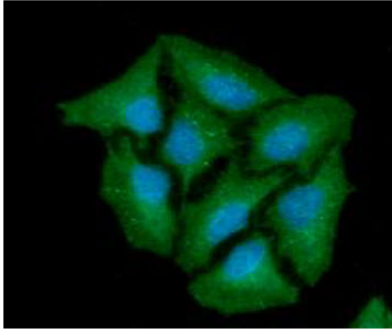
- Lane 1. : Recombinant Human CTSB
- Lane 2. : Recombinant Human CTSD
- Lane 3. : Recombinant Human CTSE
- Lane 4. : Recombinant Human CTSF
- Lane 5. : Recombinant Human CTSH
- Lane 6. : Recombinant Human CTSK
- Lane 7. : Recombinant Human CTSL
- Lane 8. : Recombinant Human CTSS
- Lane 9. : Recombinant Human CTSW
- Lane 10. : Recombinant Human CTSZ



### Immunocytochemistry/Immunofluorescence (ICC/IF)

## Human Cathepsin Z antibody

Catalog Number: ATGA0304



ICC/IF analysis of CTSZ in HeLa cells line, stained with DAPI (Blue) for nucleus staining and monoclonal anti-human CTSZ antibody (1:100) with goat anti-mouse IgG-Alexa fluor 488 conjugate (Green).