

Human Synuclein-alpha/beta antibody

Catalog Number: ASC0632

PRODUCT INFORMATION

Catalog number

ASC0632

Clone No.

3B6

Product type

Monoclonal Antibody

UnitProt No.

P37840, Q16143

NCBI Accession No.

NP_000336, NP_003076

Alternative Names

SNCA, NACP, PARK1, PARK4, PD1, α -synuclein Non-A beta component of AD amyloid, Non-A4 component of amyloid precursor, Parkinson disease 4, autosomal dominant Lewy body

PRODUCT SPECIFICATION

Antibody Host

Mouse

Reacts With

Human

Concentration

1mg/ml (determined by BCA assay)

Formulation

Liquid in. Phosphate-Buffered Saline (pH 7.4) with 0.02% Sodium Azide, 10% glycerol

Immunogen

Recombinant human α -synuclein (119-140aa) purified from E. coli

Isotype

IgG1 kappa

Purification Note

By protein-G affinity chromatography

Application

ELISA, WB, ICC/IF, FACS

Usage

The antibody has been tested by ELISA, Western blot, ICC/IF and FACS analysis to assure specificity and reactivity. Since application varies, however, each investigation should be titrated by the reagent to obtain optimal results.

Human Synuclein-alpha/beta antibody

Catalog Number: ASC0632

Storage

Can be stored at +2C to +8C for 1 week. For long term storage, aliquot and store at -20C to -80C. Avoid repeated freezing and thawing cycles.

BACKGROUND

Description

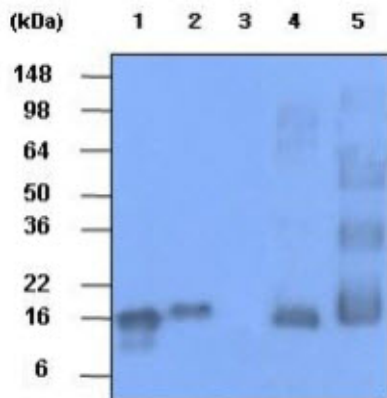
alpha-synuclein (amino acids 119-140), an acidic neuronal protein of 140 amino acids, is extremely heat-resistant and is natively unfolded with an extended structure primarily composed of random coils. alpha-synuclein has been suggested to be implicated in the pathogenesis of Parkinson's disease and related neurodegenerative disorders, and more recently, to be an important regulatory component of vesicular transport in neuronal cells. Specially, the non-Abeta component of amyloid plaques is a highly amyloidogenic peptide consisting of 35 amino acids which was first identified associated with senile plaques in the Alzheimer's disease brain.

General References

- Jakes R., et al. (1994) FEBS lett. 345, 27-32.
- Ueda K., et al. (1993) Proc. Natl.Acad. Sci. USA 90, 11282-11286.
- Kim J. (1997) Molecules and Cells 7, 78-83.
- Paik S. R., et al. (1997) Arch. Biochem. Biophys. 344, 325-334.

DATA

Western blot analysis (WB)



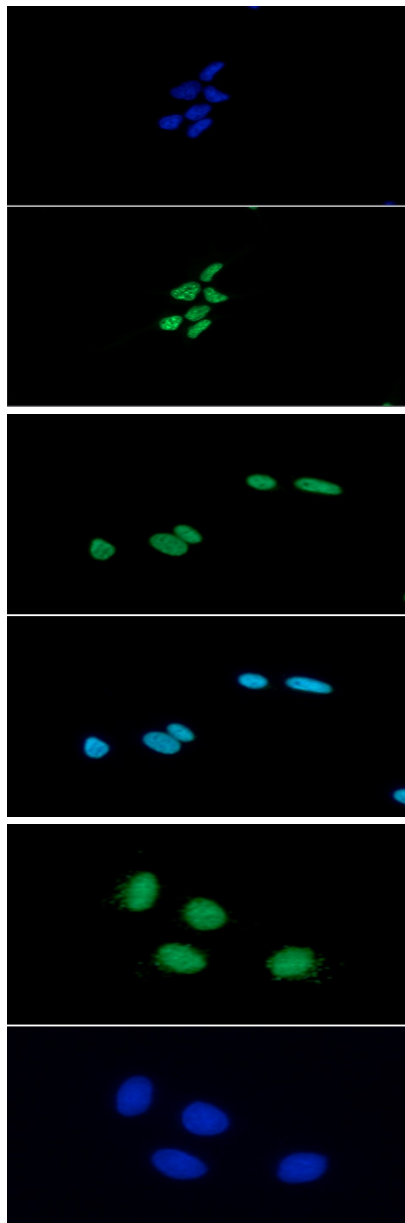
The recombinant protein (20ng) and tissue lysates (30ug) were resolved by SDS-PAGE, transferred to PVDF membrane and probed with anti-human HSP60 antibody (1:1000). Proteins were visualized using a goat anti-mouse secondary antibody conjugated to HRP and an ECL detection system.

- Lane 1.: Recombinant human alpha-synuclein protein
- Lane 2.: Recombinant human beta-synuclein protein
- Lane 3.: Recombinant human gamma-synuclein protein
- Lane 4.: Mouse brain Tissue lysate
- Lane 5.: Rat brain Tissue lysate

Immunocytochemistry/Immunofluorescence (ICC/IF)

Human Synuclein- α / β antibody

Catalog Number: ASC0632

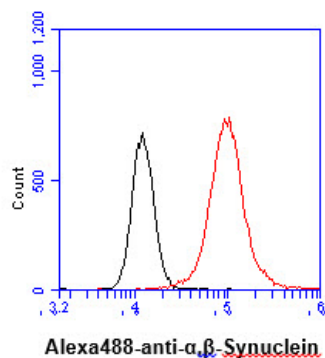


ICC/IF analysis of alpha, beta-Synuclein in LNCaP cells. The cell was stained with ACS0632 (1:100). The secondary antibody (green) was used Alexa Fluor 488. DAPI was stained the cell nucleus (blue).

ICC/IF analysis of alpha, beta-Synuclein in U87MG cells. The cell was stained with ACS0632 (1:100). The secondary antibody (green) was used Alexa Fluor 488. DAPI was stained the cell nucleus (blue).

ICC/IF analysis of alpha, beta-Synuclein in C6 cells. The cell was stained with ACS0632 (1:100). The secondary antibody (green) was used Alexa Fluor 488. DAPI was stained the cell nucleus (blue).

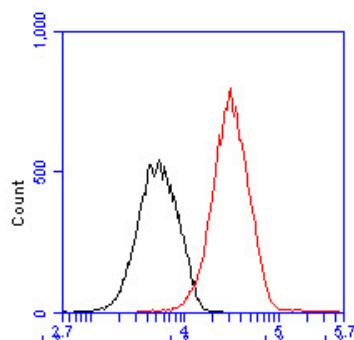
Flow cytometry (FACS)



Flow cytometry analysis of alpha, beta-Synuclein in LNCaP cell line, staining at 2-5ug for 1×10^6 cells (red line). The secondary antibody used goat anti-mouse IgG Alexa fluor 488 conjugate. Isotype control antibody was mouse IgG (black line).

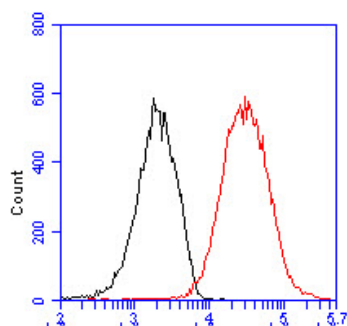
Human Synuclein-alpha/beta antibody

Catalog Number: ASC0632



Alexa488-anti- α,β -Synuclein

Flow cytometry analysis of alpha, beta-Synuclein in U87MG cell line, staining at 2-5ug for 1×10^6 cells (red line). The secondary antibody used goat anti-mouse IgG Alexa fluor 488 conjugate. Isotype control antibody was mouse IgG (black line).



Alexa488-anti- α,β -Synuclein

Flow cytometry analysis of alpha, beta-Synuclein in C6 cell line, staining at 2-5ug for 1×10^6 cells (red line). The secondary antibody used goat anti-mouse IgG Alexa fluor 488 conjugate. Isotype control antibody was mouse IgG (black line).